

Printer's Plan 2020.03

Service Release

04/27/2020

Fixes and Changes

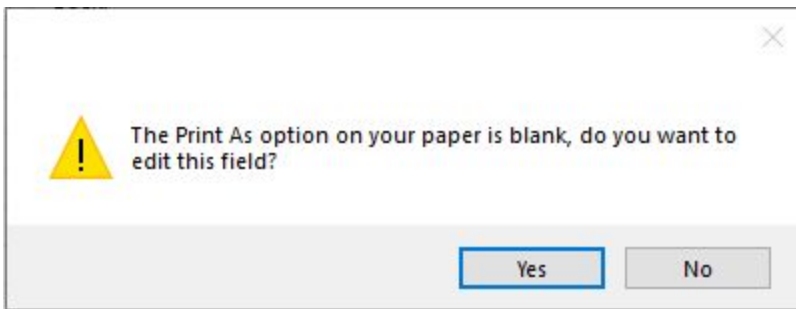
2020.01 Changes

Home Tab

In the Home tab of Printer's Plan, under the Printer's Plan Website folder selecting the Home Page or Support Page option resulted in a script error. This is now fixed.

'Print As' Field on Digital Jobs

In the Settings/Job Options window there is a new option to display an alert if the Print As method is blank on digital jobs. If this option is to yes, and an item is created without setting the Print As field the following alert is displayed:.



When you click Yes, Printer's Plan will take you to the Paper Specs window. Previously if you made a change to the value in the Print As field the selection was not saved to the item. This is now fixed and the selection is saved.

QuickBooks IIF Import Special Characters

When creating an IIF file for import to QuickBooks if the Printer's Plan data contained a ' character, or the ; character then the export file potentially failed. These characters are now captured and replaced to prevent a failure in the export file.

QuickBooks Invoice Import - Sales Rep Field

In the Settings/Employees/ Sales Reps table there is a new column Integration ID.

Employees

Sales Reps

Limit: 55. To Hide: Type ~ before text.

No	Name	Sort	Comm%	of	IntegrationID
201	Sam	1	10.00	Net Sale	
202	Joe	2	30.00	Margin	
203	Tim	3		Net Sale	

The value in this field is used when importing invoice data from Printer's Plan to QuickBooks. There are two methods to import Printer's Plan invoices to Quickbooks -- Direct Connect method, or via an IIF file. These methods are outlined in the following guide: https://printreach.com/printersplan/docs/UserGuide/QuickBooks_Integration.pdf

If you are using the Direct Connect method the IntegrationID field should be populated with the initials of the matching QuickBooks Sales Rep.

QuickBooks Sales Rep

Edit Sales Rep

Sales Rep Name: Tim

Sales Rep Initials: TM

Sales Rep Type: Employee

Sales Rep is inactive

OK
Cancel
Edit Name...

Employees

Sales Reps

Limit: 55. To Hide: Type ~ before text.

No	Name	Sort	Comm%	of	IntegrationID
201	Sam	1	10.00	Net Sale	
202	Joe	2	30.00	Margin	
203	Tim	3		Net Sale	TM

If the IntegrationID field is blank then the sale rep data will not be sent to QuickBooks.

If you are importing invoice data via the IIF method the IntegrationID field should be populated using the following format: **Employee Name: Employee:Employee Initials** In this format the Employee Name and Employee Initials are established in QuickBooks:

Edit Sales Rep

Sales Rep Name: Tim

Sales Rep Initials: TM

Sales Rep Type: Employee

Sales Rep is inactive

OK
Cancel
Edit Name...

In this example the IntegrationID field in Printer's Plan would look like this:

Employees

Sales Reps

Limit: 55. To Hide: Type ~ before text.

No	Name	Sort	Comm%	of	IntegrationID
201	Sam	1	10.00	Net Sale	
202	Joe	2	30.00	Margin	
203	Tim	3		Net Sale	Tim:Employee:TM

If the IntegrationID is blank then the value in the Name field will be used in the IIF export file.

Large Format Materials

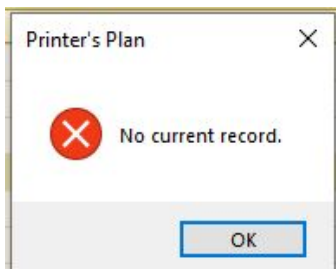
On paneling jobs the following condition caused Printer's Plan to crash. A printable material was added to the item, then a non printed material, such as a laminate, was also added to the item. When you selected the not printed material the program crashed. This is now fixed.

Large Format Information

On the Work Order for large format print jobs the incorrect Yield data was printed, this is now fixed.

Cutting Diagram

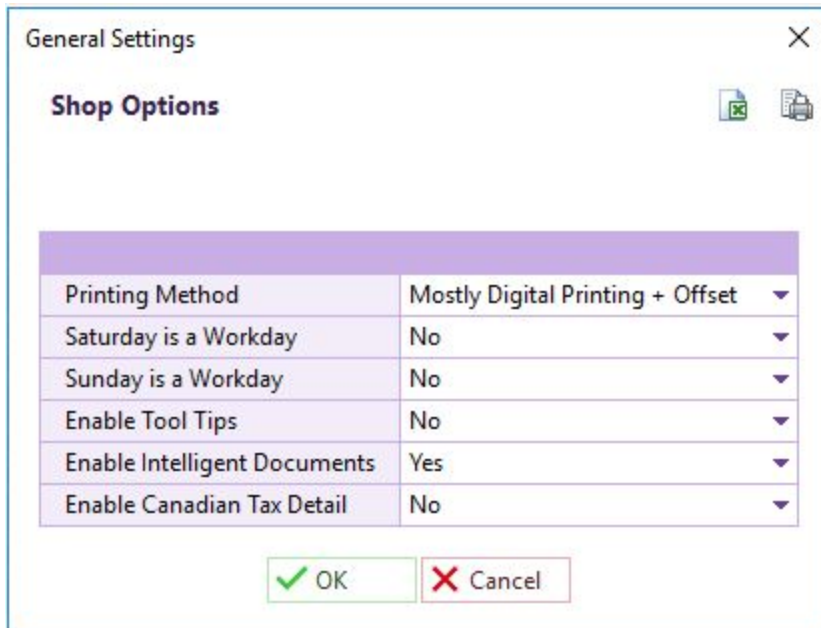
When creating a new item, after selecting a paper service the Paper Specs window appears. In this window if you clicked on the scissors button to display the cutting diagram Printer's Plan returned the following error message:



This is fixed. Please note that the cutting diagram will not be able to display/print the job-item number until the item is first saved.

Canadian Tax Option

In the Settings/General Settings/Shop Options there is a new Enable Canadian Tax Detail option:



This setting applies if your Printer's Plan license is linked to an address in Canada. The value in this field should be set to Yes if the invoice needs to display both the GST and PST tax amounts.

2020.02 Changes

Large Format

On Large Format jobs if the width was less than an inch the program crashed, this is now fixed.

SMTP Client

If the Setting/General Settings/SMTP Settings window the data in the Mail From field was not used. This is now fixed.

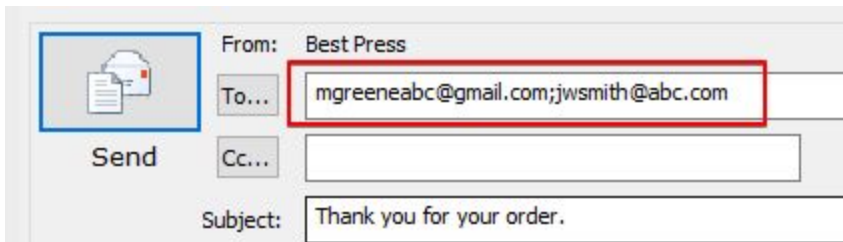
Job Documents

If the document path included a ' character Printer's Plan would return an error message. This is now fixed.

2020.03 Changes

SMTP Client

You can now include multiple email addresses in the **To** field of an email message.. These email addresses have to be separated by a semicolon character ;



The screenshot shows an email composition window. On the left, there is a 'Send' button with a paper plane icon. The main area contains the following fields:

- From:** Best Press
- To...** mgreeneabc@gmail.com;jwsmith@abc.com (This field is highlighted with a red border)
- Cc...** (Empty field)
- Subject:** Thank you for your order.