



PRINTER'S PLAN

Web Solutions Installation Guide

for Windows 10

System Requirements

- Windows 10
- Static Internet IP Address
- IIS 7 or later

(IIS installation directions are included in this guide.)

Questions?

800-638-7526 Option 2

support@printersplan.com

STEP1: DIRECT TRAFFIC FROM PUBLIC IP ADDRESS TO LOCAL IP ADDRESS

You may perform this step now or after you complete all the steps in this document:

1. On any computer on your network, log in to your Router.
2. On the router direct traffic from your static public IP address provided by your Internet provider to the local IP address (internal address) of the computer that will be running the Printer's Plan Web solution.

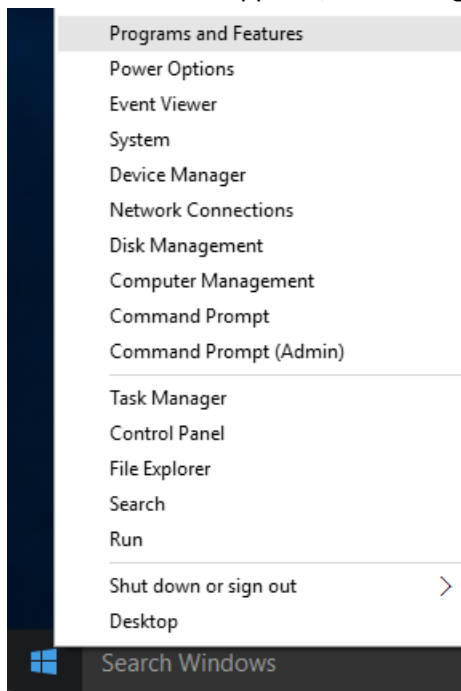
STEP2: INSTALL INTERNET INFORMATION SERVICES (IIS)

Before you begin, ensure that you have the administrative user rights on the computer on which you plan to install IIS.

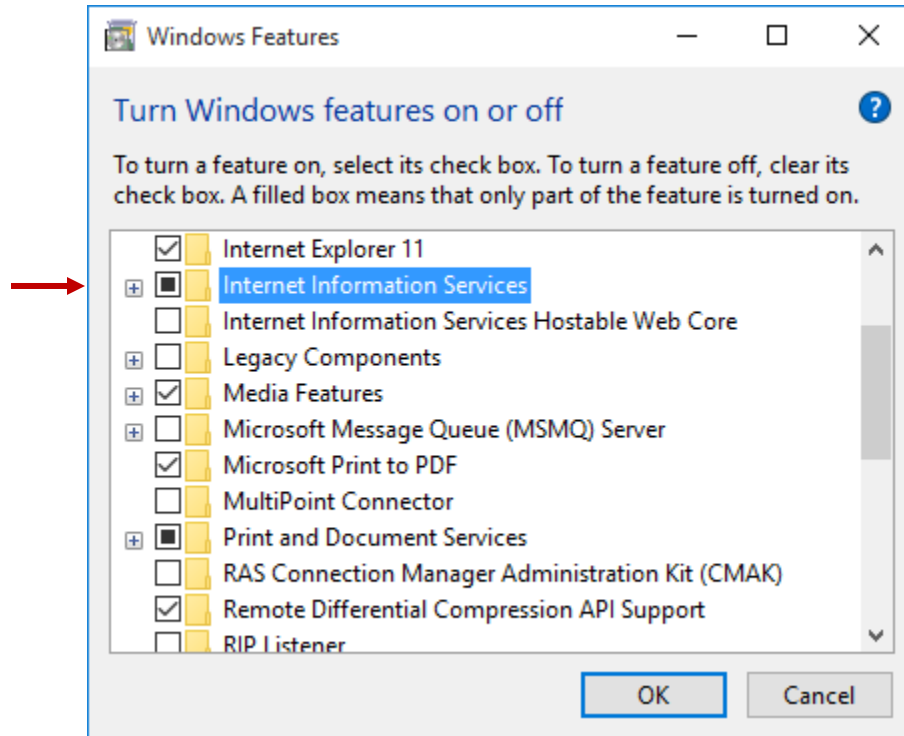
1. Using a mouse, right click on the Windows Start button:



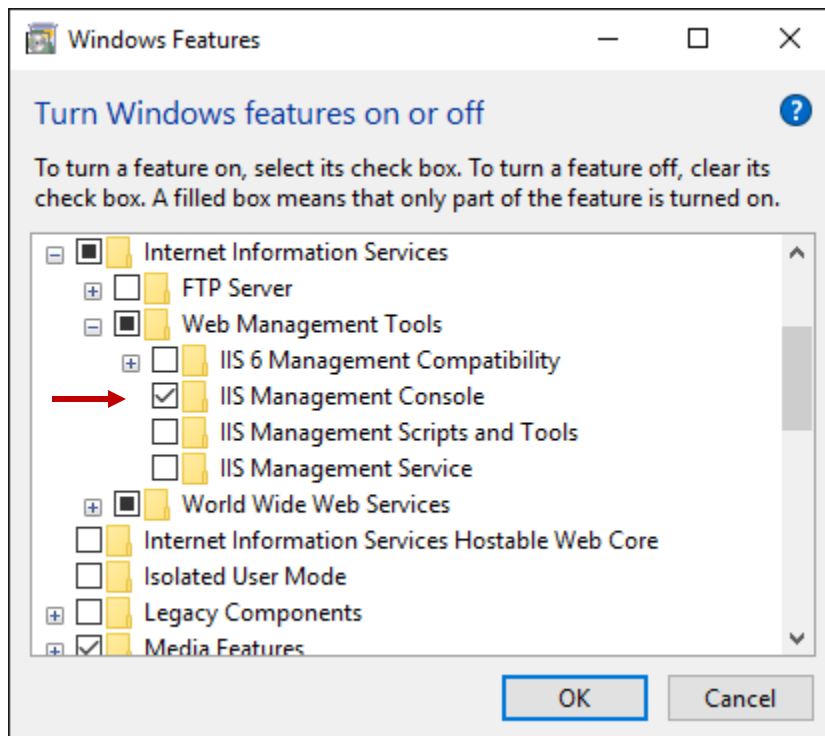
2. On the menu that appears, select Programs and Features



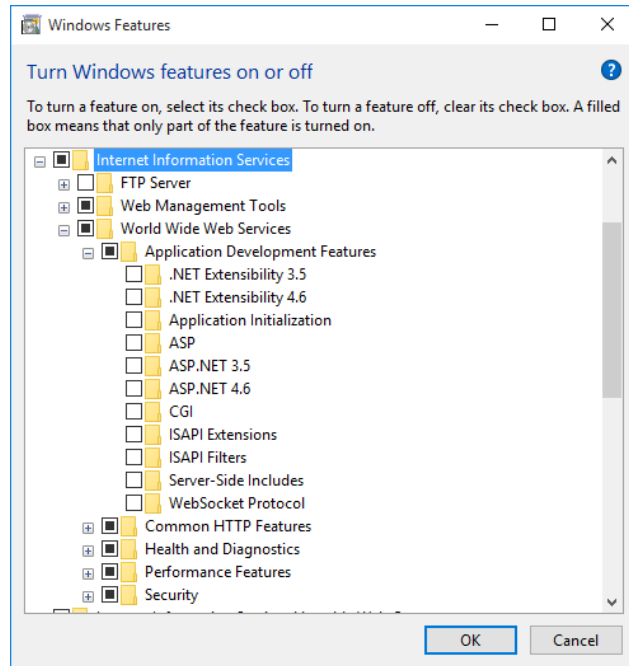
3. In the window that appears, select "**Turn Windows features on or off**".
4. In the list of Windows features, select the **Internet Information Services** option.



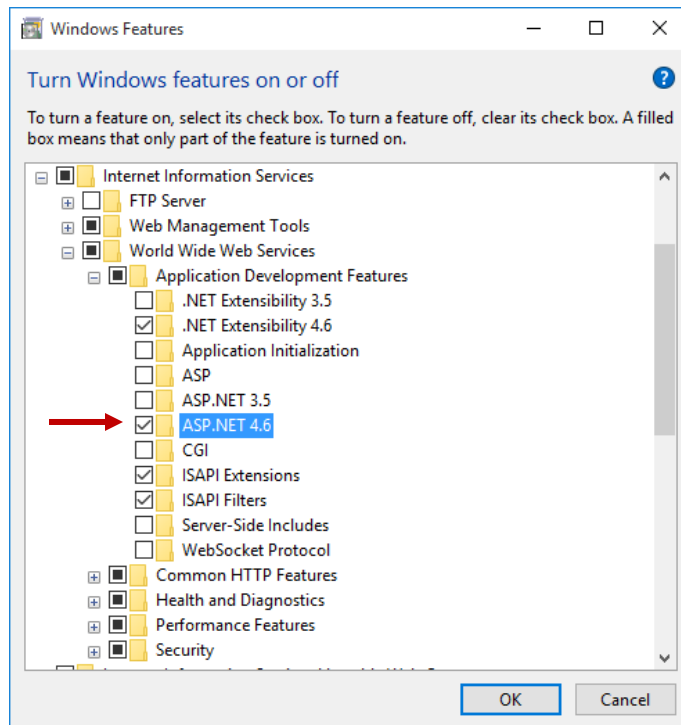
5. Expand the **Internet Information Services** node, and then expand the **Web Management Tools** node. Checkmark the IIS Management Console option.



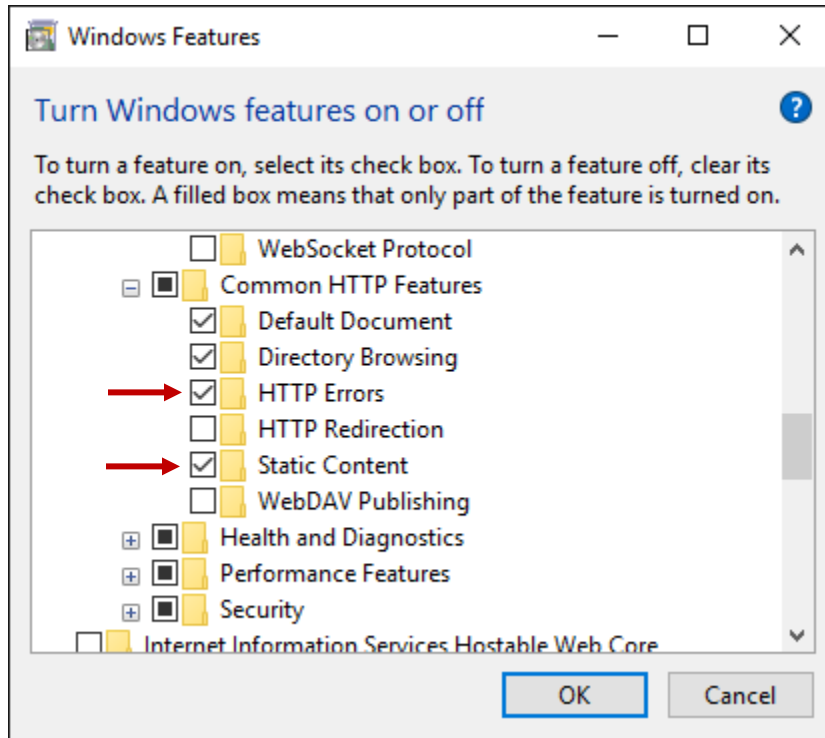
- Expand the **World Wide Web Services** node, and then the **Application Development Features** node.



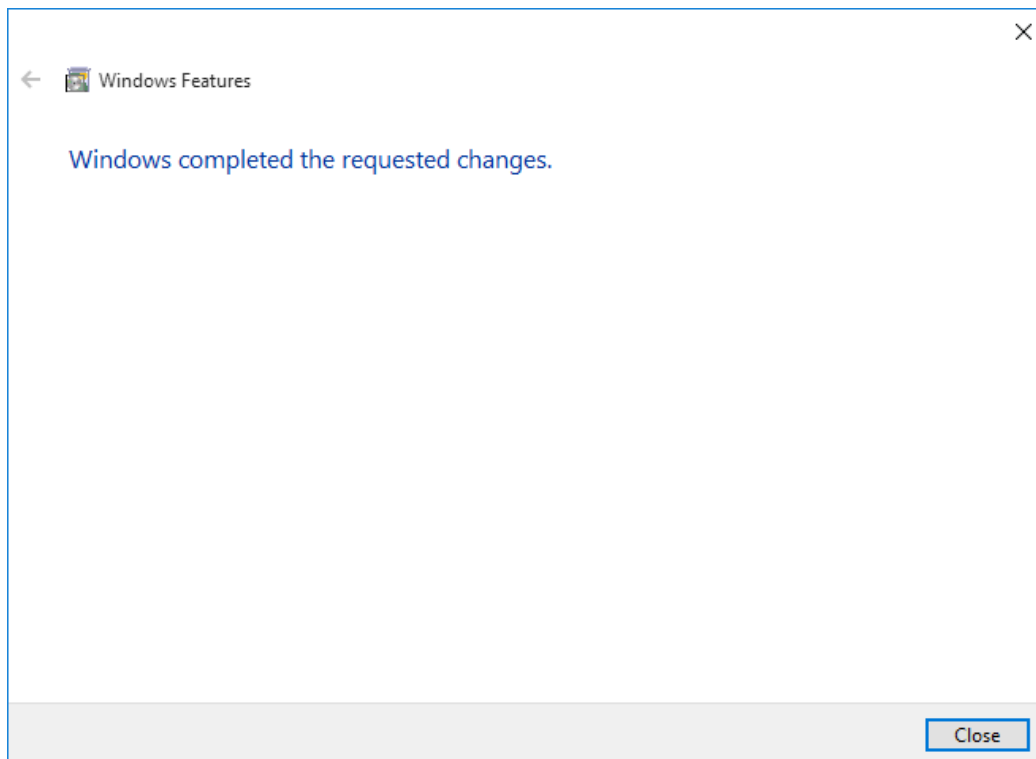
- In the **Application Development Features** node, checkmark the **ASP.NET 4.6** option.



- Expand the **Common HTTP Features** node, checkmark the **HTTP Errors** and **Static Content** options and click **OK**.

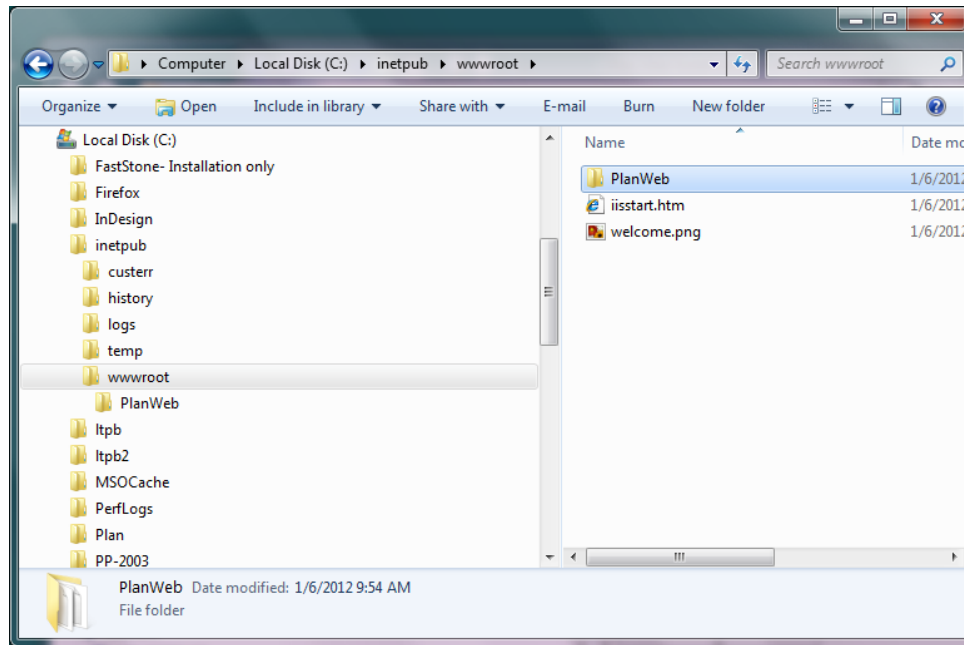


- The following confirmation window appears. Click **Close**.



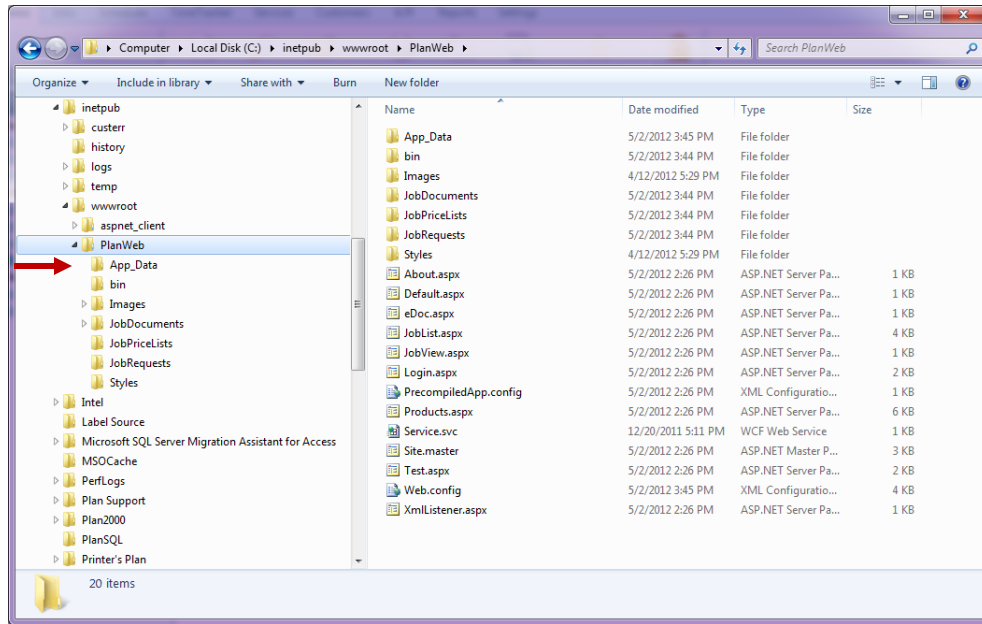
STEP 3: ADD THE PLANWEB SITE TO THE WEB ROOT.

1. On the computer, download the following zipped file to your desktop:
<http://printersplan.com/WebSolutions/WebSolutions-NewInstall.zip>
2. Unzip the **WebSolutiuons-NewInstall.zip** file and copy the **PlanWeb** folder into the **C:\inetpub\wwwroot** folder.

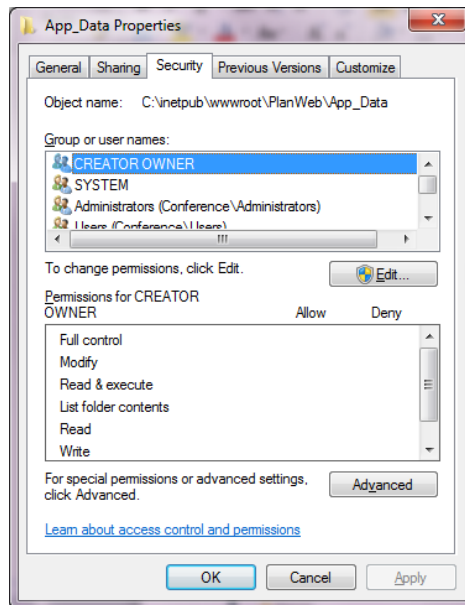


STEP 4: SET PERMISSION OF THE APP_DATA FOLDER.

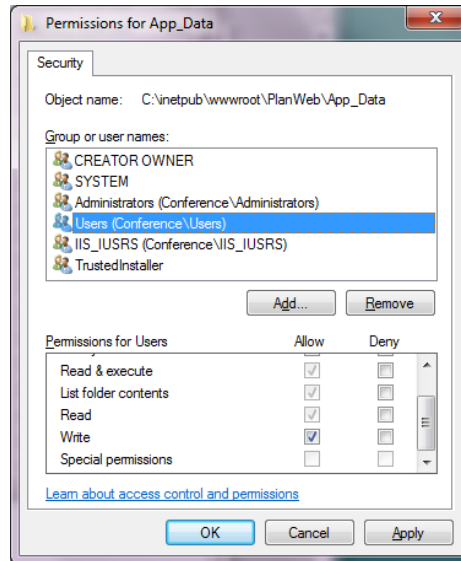
1. Open the **PlanWeb** folder (located in the C:\inetpub\wwwroot directory). The following files and folders will be listed:



2. Right-click on the **App_Data** folder, and, from the menu that appears, select **Properties**.
3. In the **Properties** window, click the **Security Tab**. The following window appears.



4. Click **Edit**. The **Edit** window appears.



5. Select **Users** under **Group or user names**.
6. In the **Permissions for Users** section, checkmark **Allow** in the **Write** option.
7. Click **Apply**.
8. Click **OK** and then **OK** again to close the **Properties** window.
9. Repeat steps 2 through 8 for each of the **JobRequests** and **JobDocuments** folders.

Note: The above folders are the only folders that need to be shared from the PlanWeb directory.

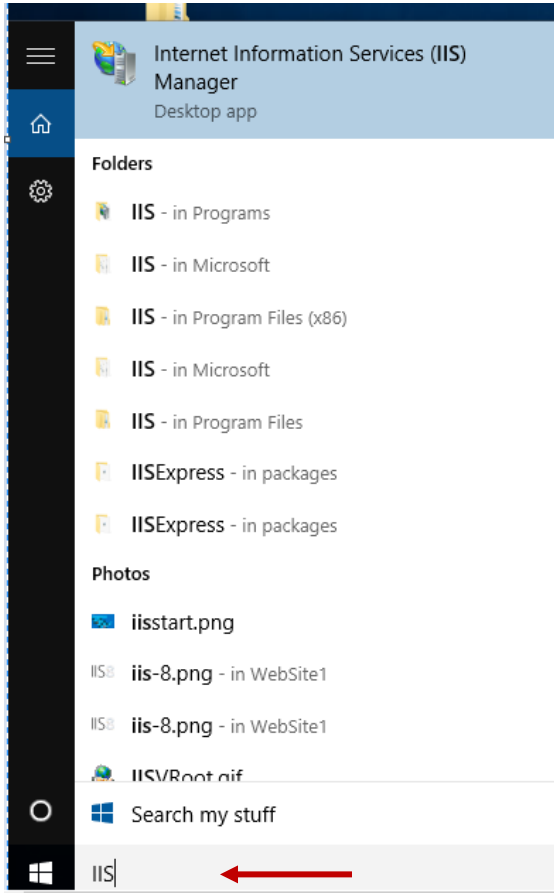
STEP 5: COPY FILES TO THE APP_DATA FOLDER.

1. Copy the **PlanData.mdb** and **Planwin.pp** files from the Printer's Plan folder on your server computer to the **C:\inetpub\wwwroot\PlanWeb\App_Data** directory.
2. In the **C:\inetpub\wwwroot\PlanWeb\App_Data** folder there is a **pp-Eval** file. When you double-click on this file an evaluation version of Printer's Plan will open. This version of Printer's Plan will be used to evaluate orders that are processed by the web solution. For convenience, you may want to create a shortcut on your desktop to the **pp-Eval** file.

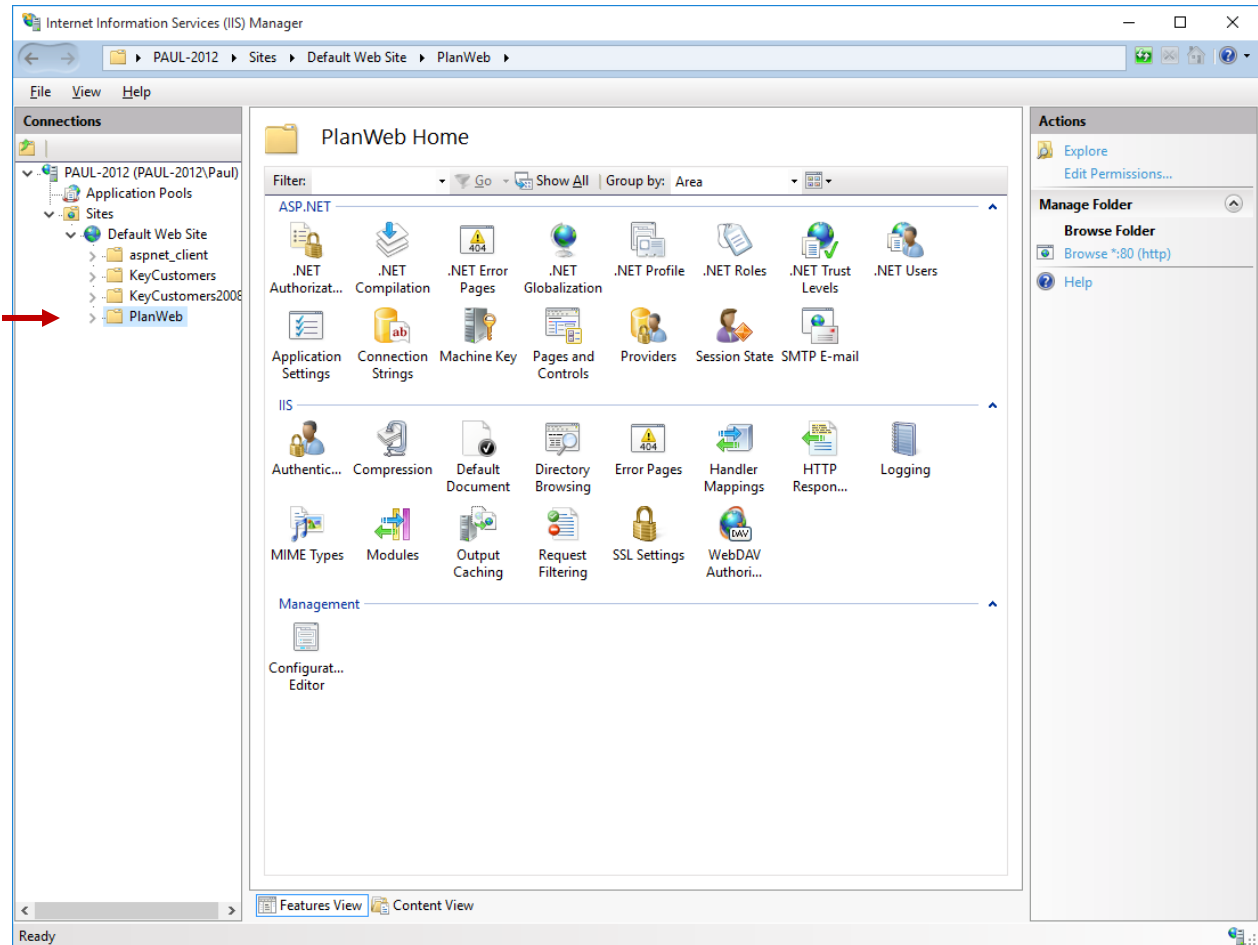
*****Important***** During the evaluation period, the program will use a copy of your Printer's Plan database file, not the live database. Any information entered into Printer's Plan during the evaluation period, such as Template Jobs, will be removed when you transition to the live environment. If you wish to skip the evaluation and start in a live environment, please notify the Printer's Plan office.

STEP 6: IN IIS, SET PLANWEB TO AN APPLICATION.

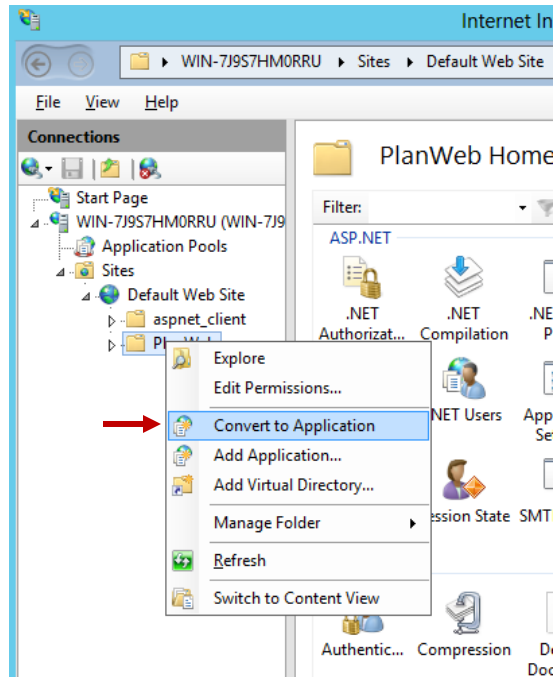
1. In the **Search Windows** field, type **IIS** and select the Internet Information Services (IIS) Manager.



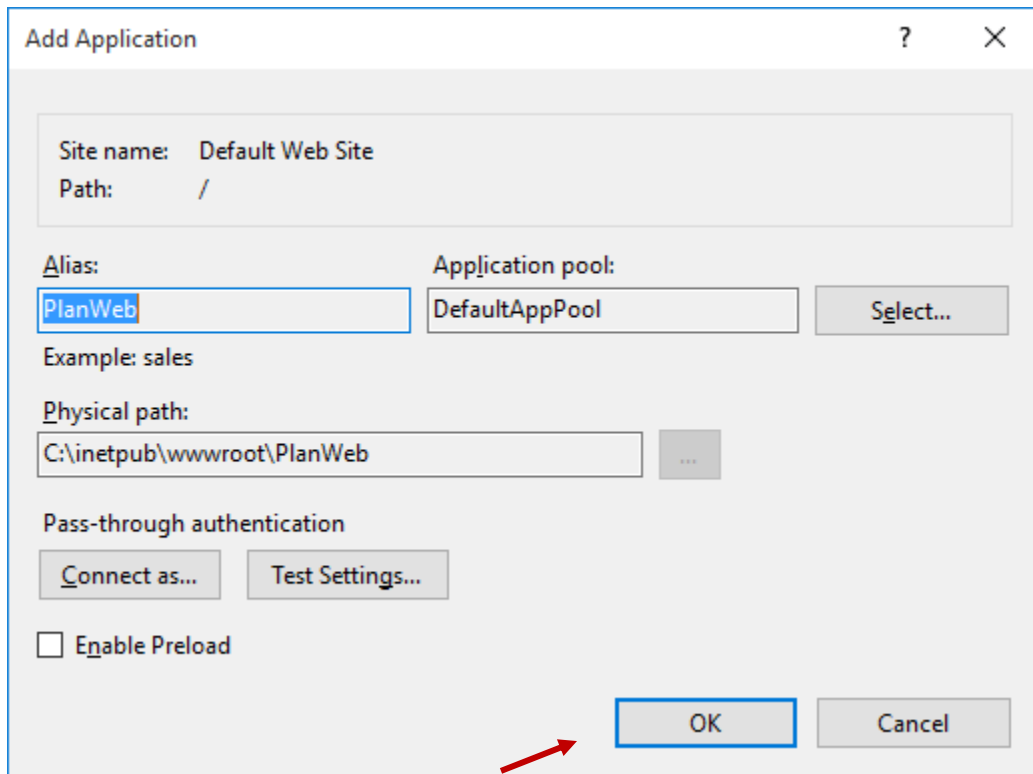
2. The **Internet Information Services (IIS) Manager** loads.



3. In the **IIS Manager** window, open the **Sites** node and expand the **Default Web Site** node.
Under the Default Web Site tree, **PlanWeb** is listed.
4. Right-click the **PlanWeb** folder and, from the menu that appears, click **Convert to Application**.

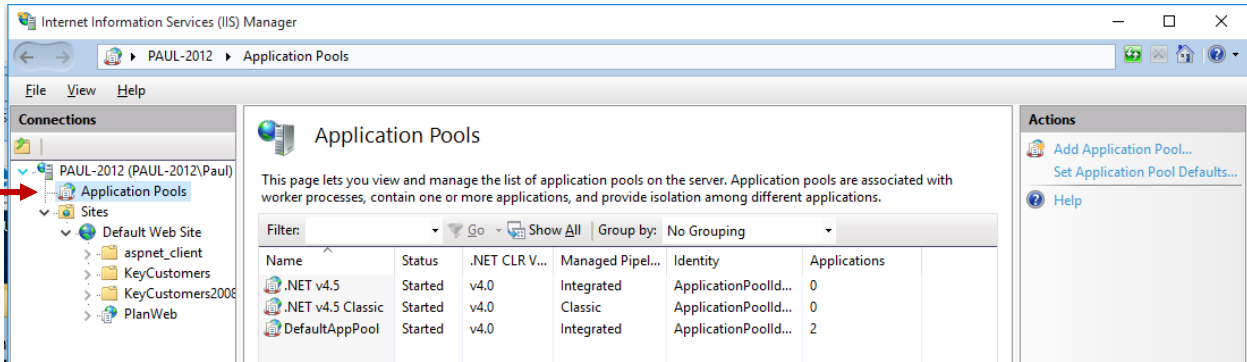


The **Add Application** window appears.

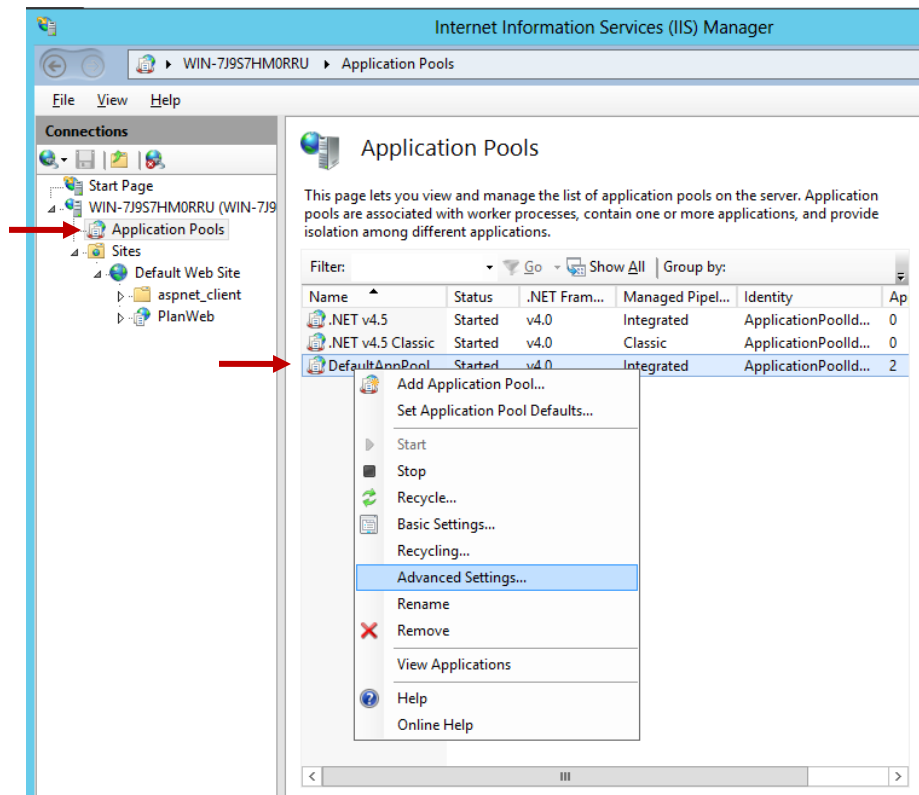


5. Click **OK**.

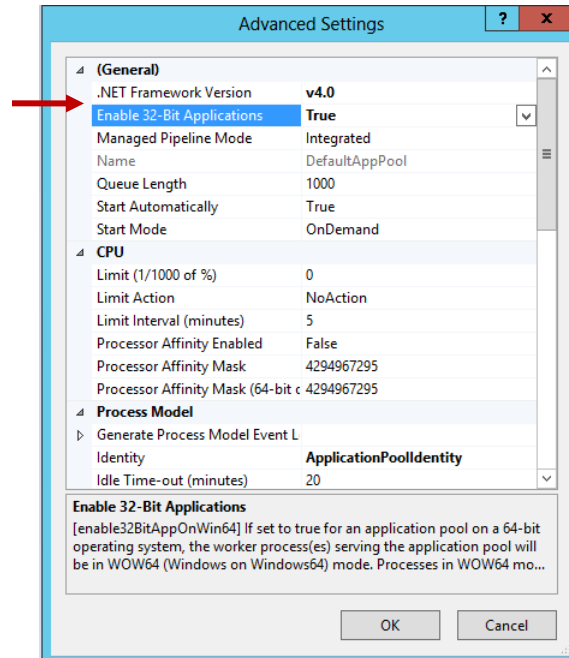
6. In the **IIS Manager** window, click **Application Pools**.



7. In the **Application Pools** listing, right-click **DefaultAppPool** and, from the menu that appears, select **Advanced Settings...** The **Advanced Settings** window appears.

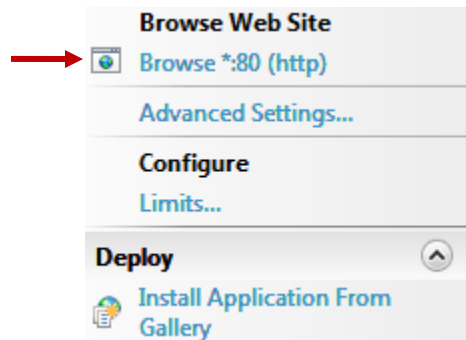


8. In the **General** section, set **.NET Framework Version** to **v4.0** and **Enable 32-Bit Applications** to **True**.

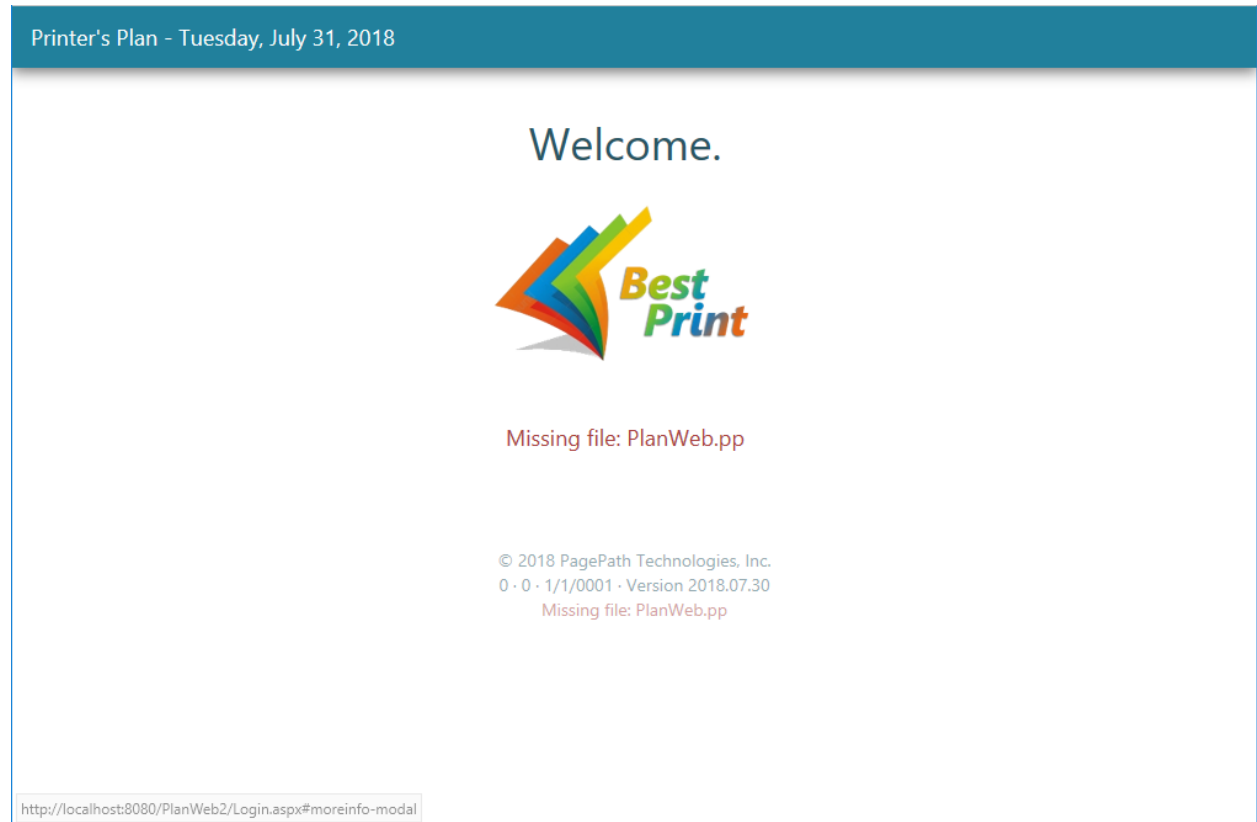


9. Click **OK**.

10. In **IIS Manager**, select the **PlanWeb** folder and click **Browse *:80(http)**



The **PlanWeb** page appears.



11. When you have reached this point of the installation process, please contact PagePath support to activate the Web Solution:

866-770-7561

Note: Before you call, be sure the traffic from your public IP address has been directed to the local IP address of this computer (Step 1 on page 1 of this document).

*****Important***** During the evaluation period, the program will use a copy of your Printer's Plan database file, not the live database. Any information entered into Printer's Plan during the evaluation period, such as Template Jobs, will be removed when you transition to the live environment. If you wish to skip the evaluation and start in a live environment, please notify the Printer's Plan office.

We welcome your comments.